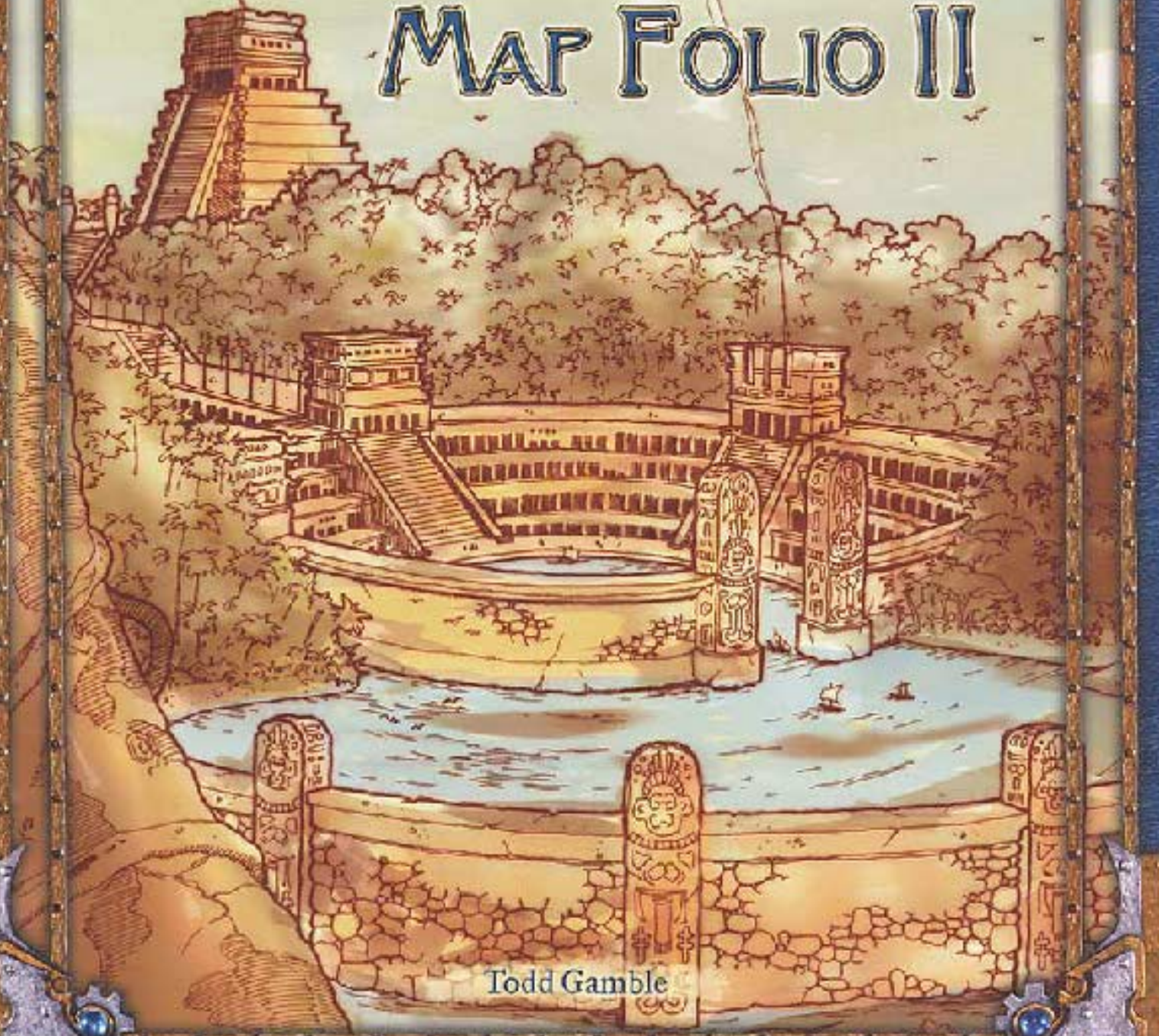
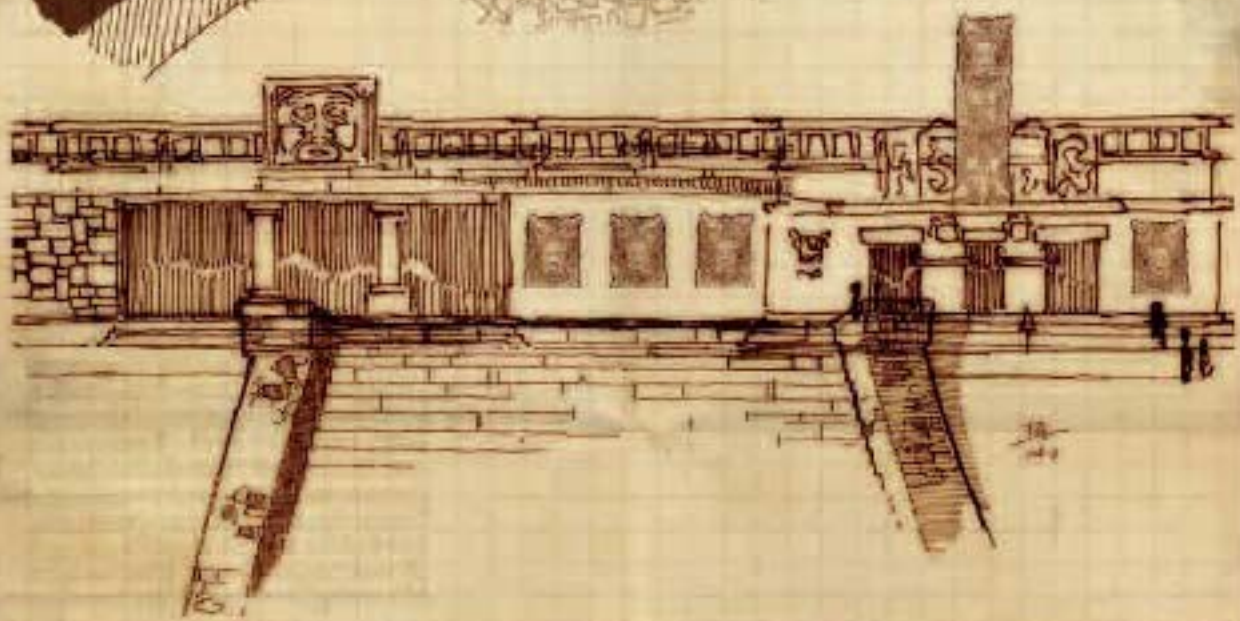
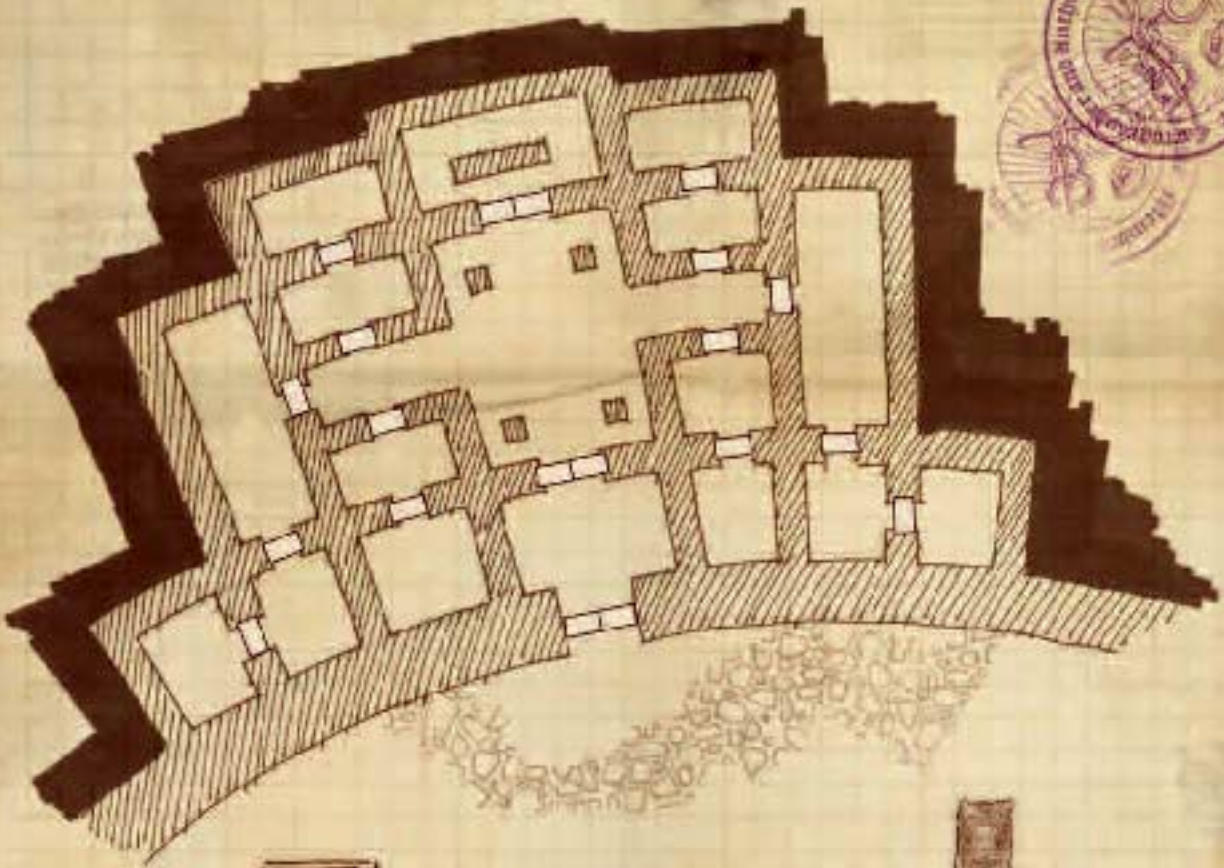


DUNGEONS
DRAGONS® Accessory

MAP FOLIO II



Todd Gamble

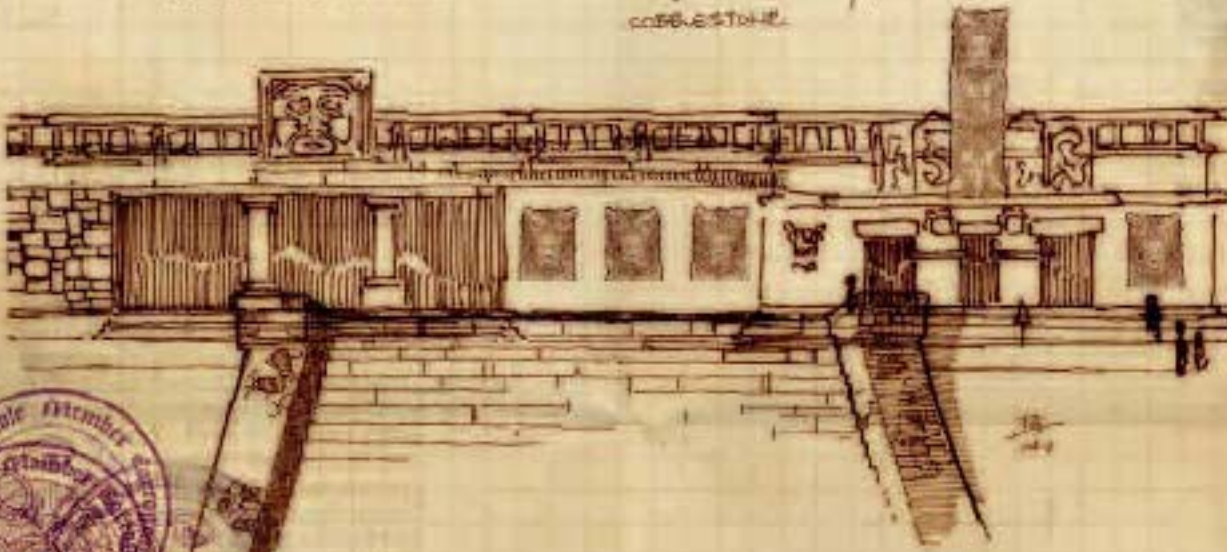
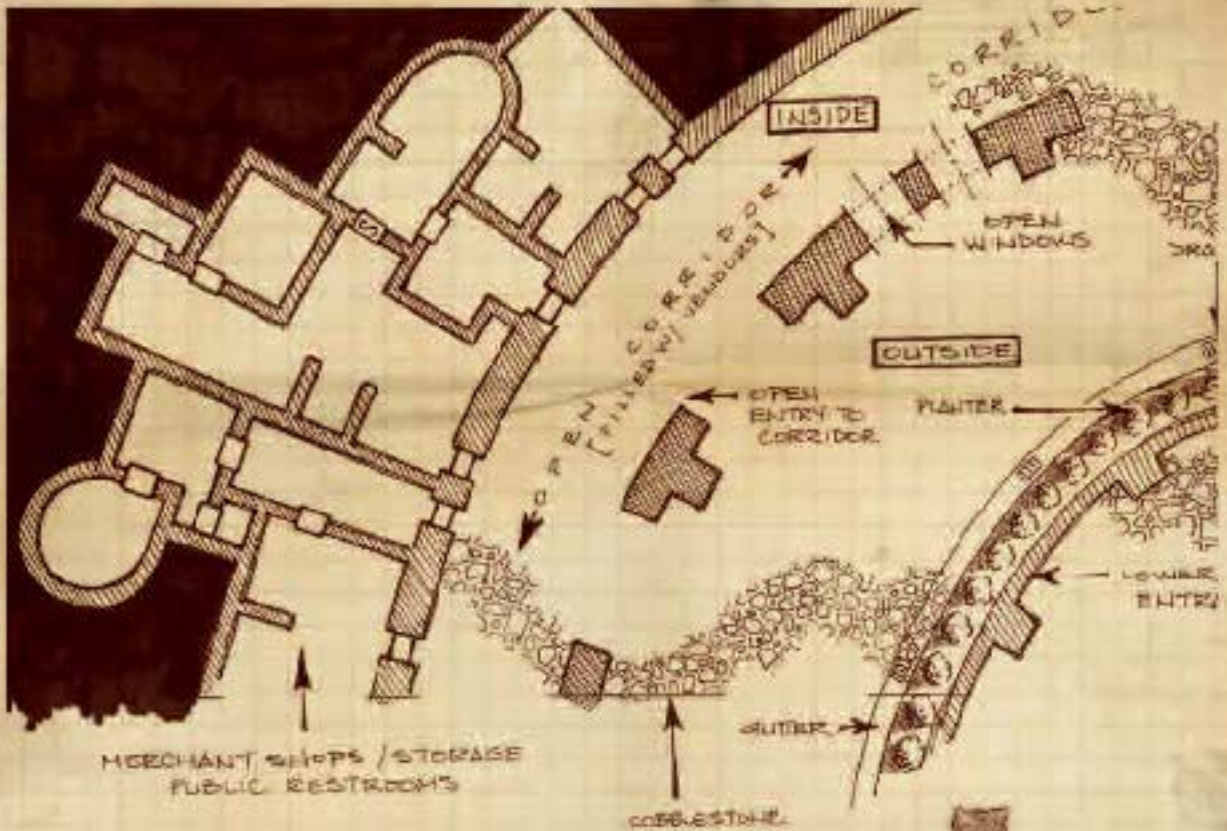


Typical Dwellings (apartments)

One square equals 5 feet

Scale 1/4" = 10 feet

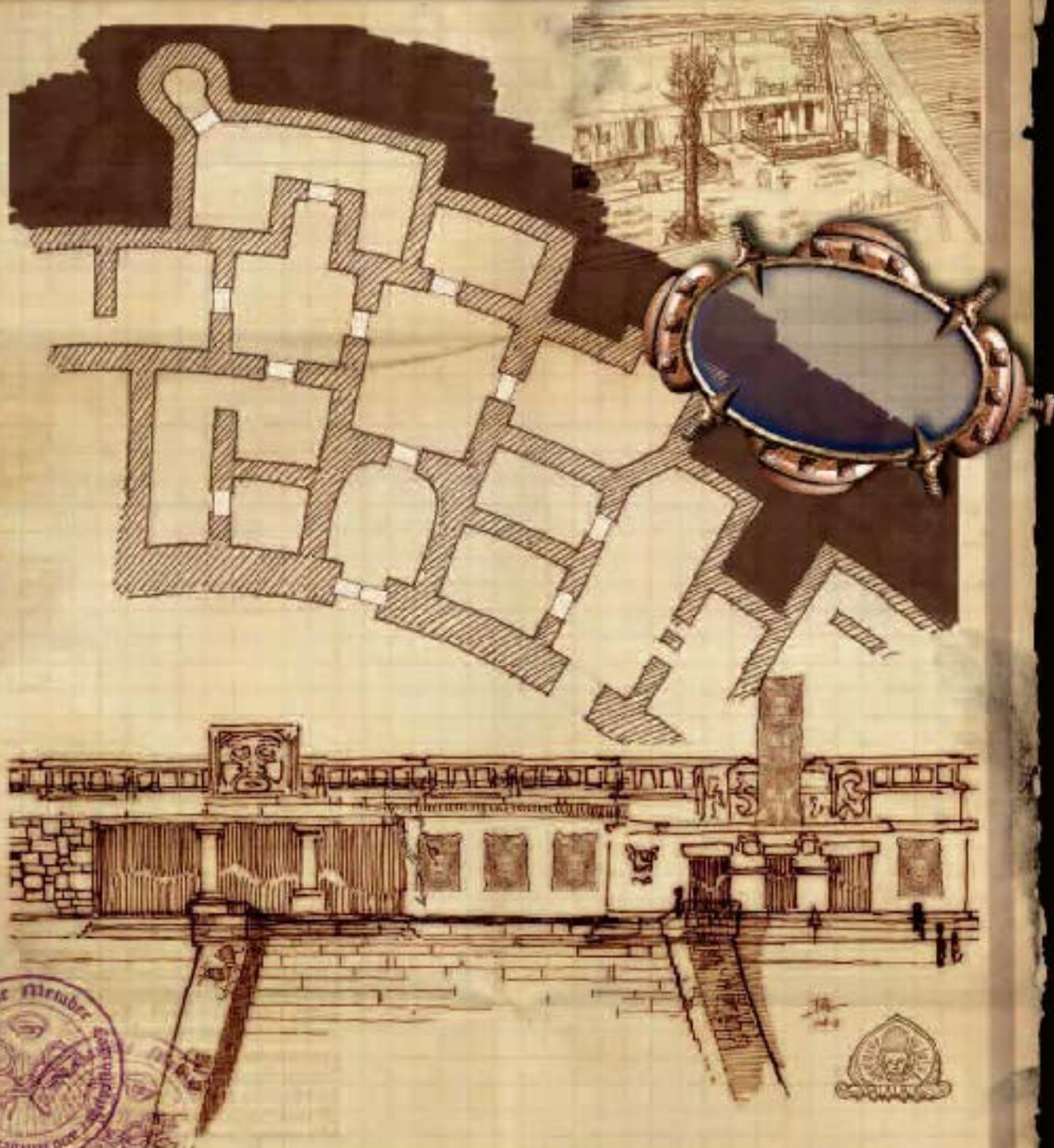




Typical Dwellings
 (mid-class dwellings with merchant sites)

One square equals 5 feet

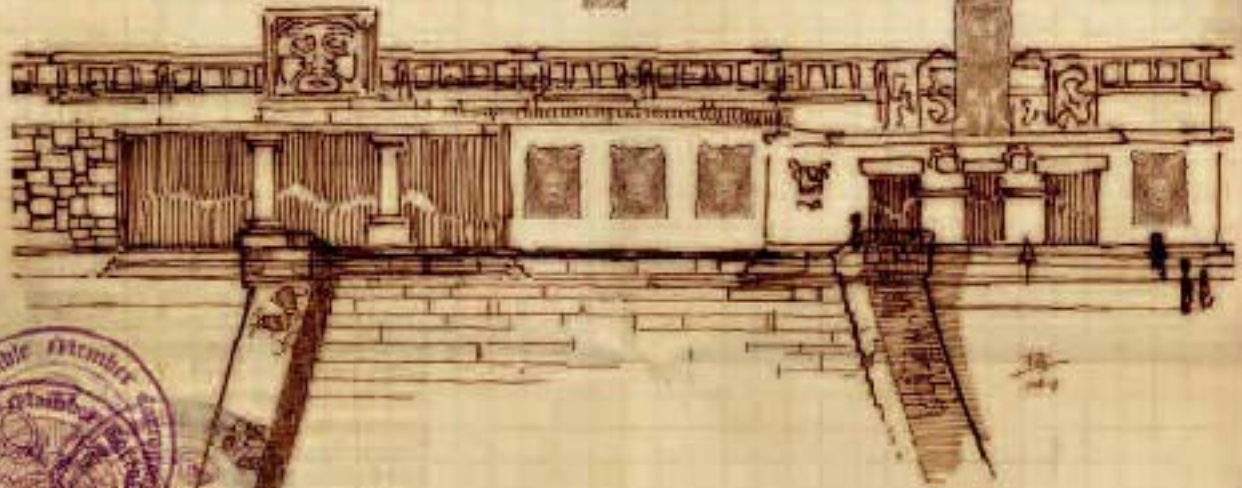
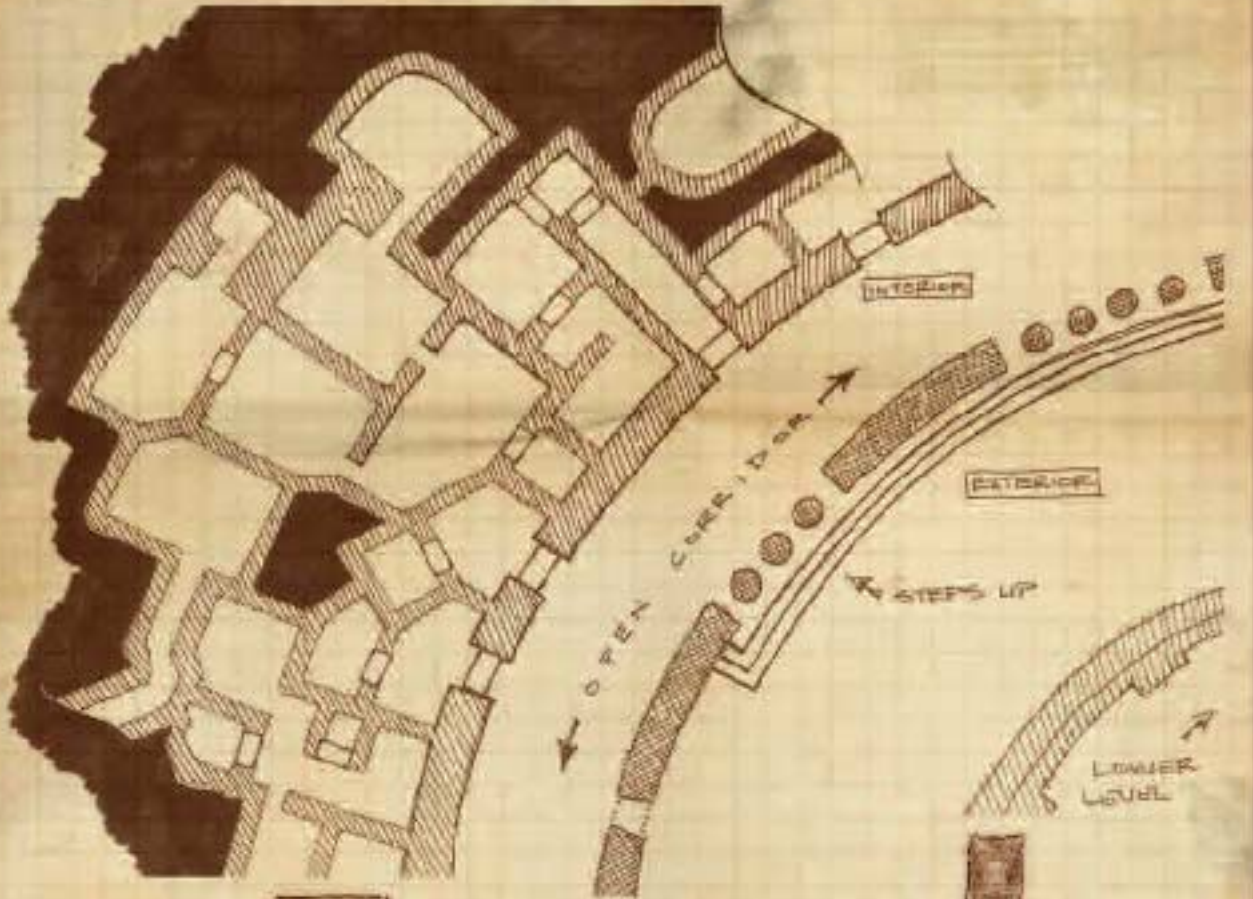
scale proportional to page



Typical Dwellings
(wealthy homeowner)

One square equals 5 feet

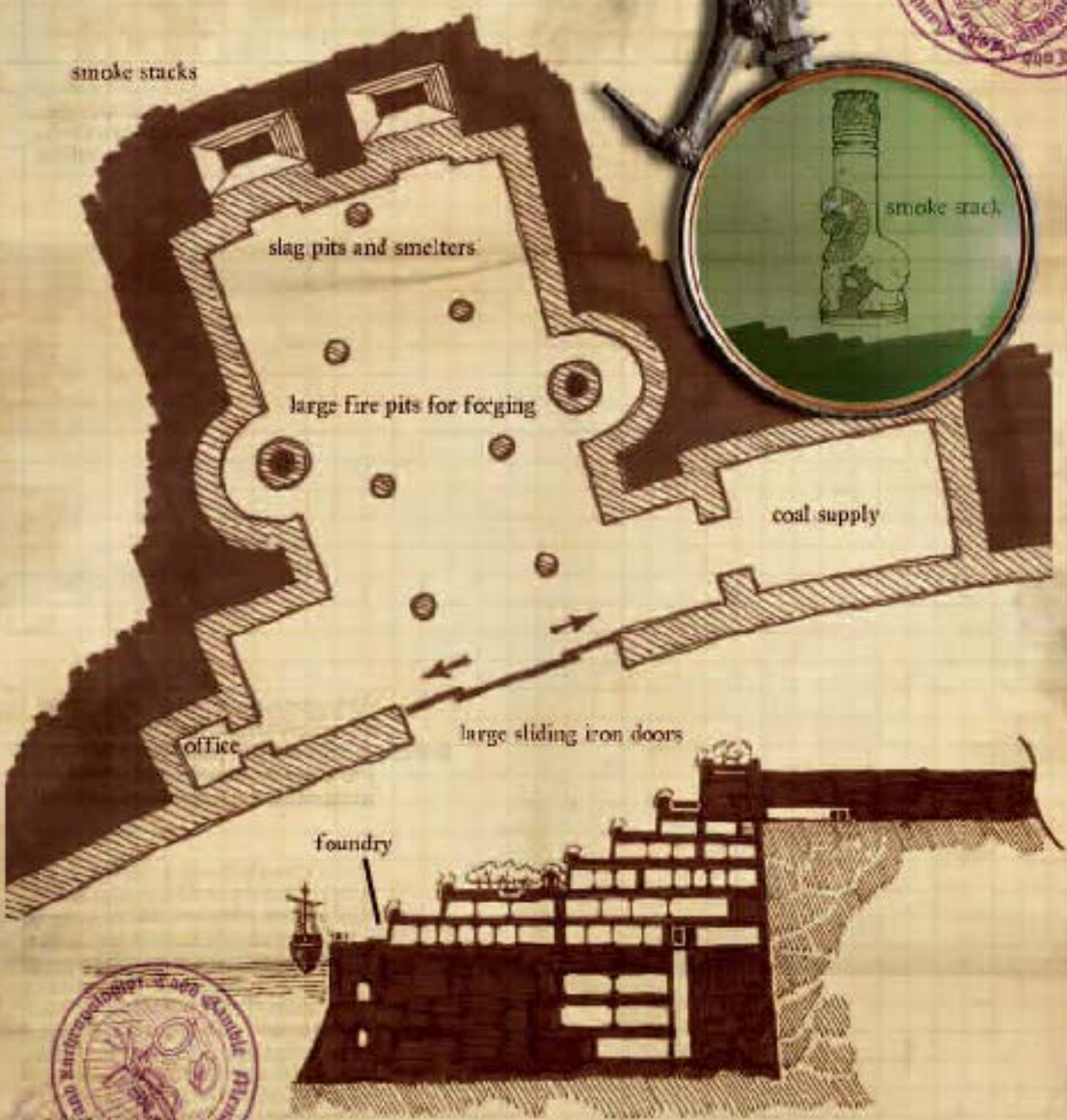
scale 1/4" = 10 feet



Typical Dwellings
(typical mid-class dwellings)

One square equals 5 feet

Scale: 1 square = 5 feet



smoke stacks

slag pits and smelters

large fire pits for forging

coal supply

office

large sliding iron doors

foundry

smoke stack



Foundry

(smelter and forging operations)

One square equals 15 feet

scale indicated in feet



cutaway view of floors 1 through 3

Floor 3



Floor 2



Floor 1



Aqueduct

Stone Outpost



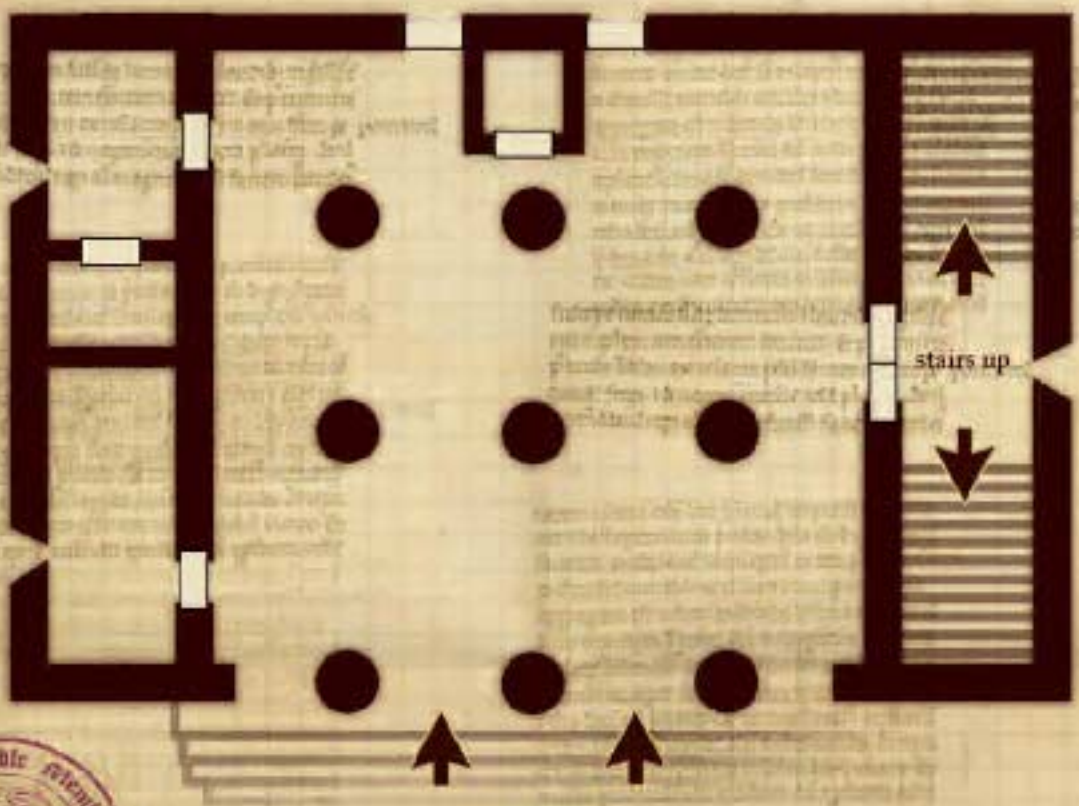
Outpost in the northern region of Chac Tlaloc



Jungle Outpost
(protecting aqueduct)

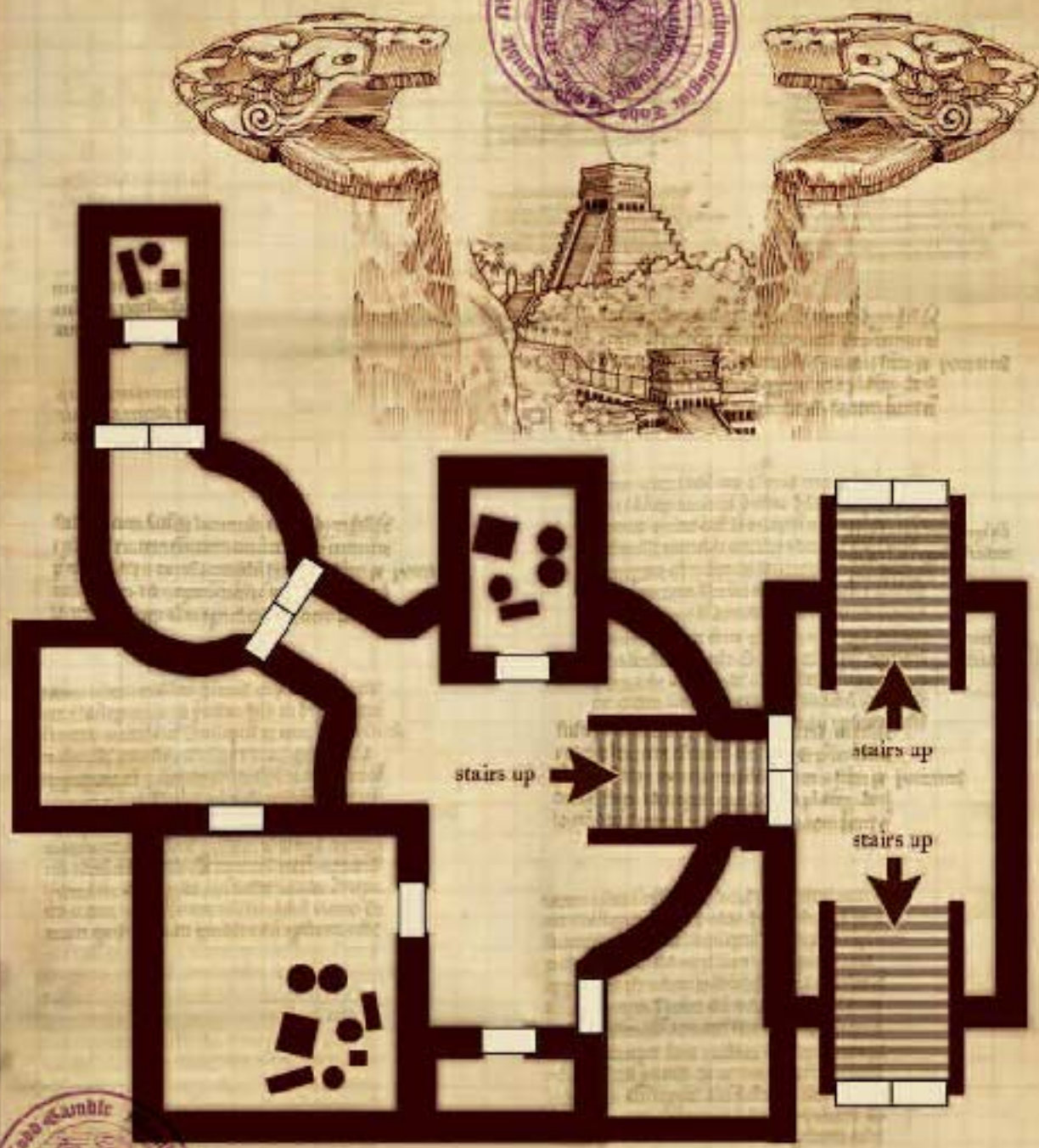
One square equals 5 feet

scale measured in feet



(entry room)
The King's Temple

One square equals 5 feet



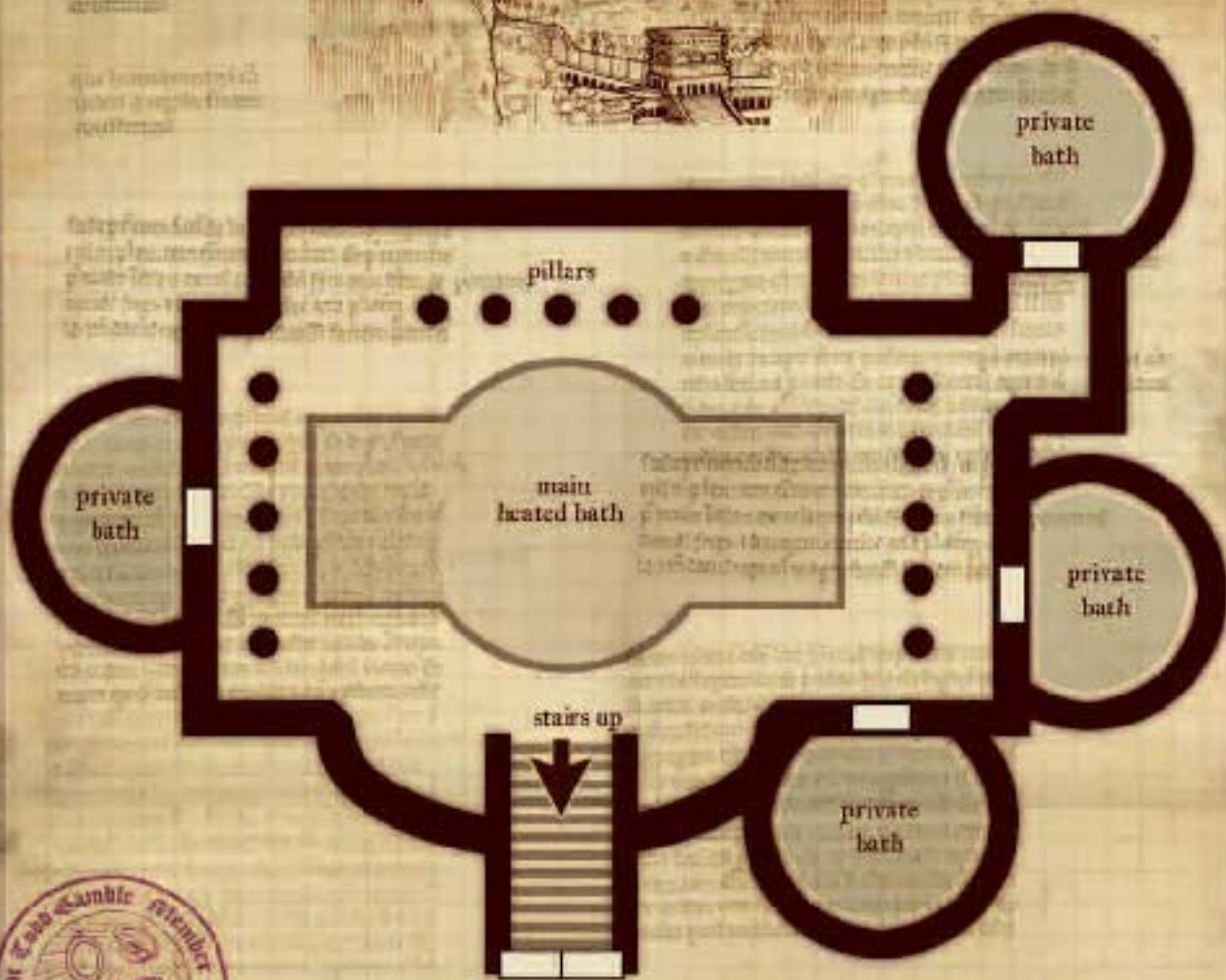
(treasury)

The King's Temple

One square equals 5 feet

Scale: 1 square = 5 feet



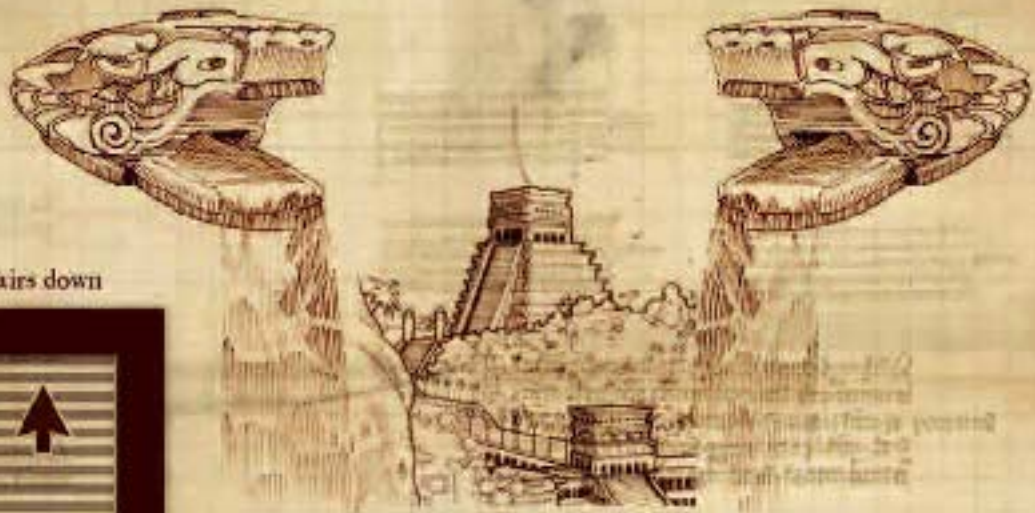


(bathhouse)

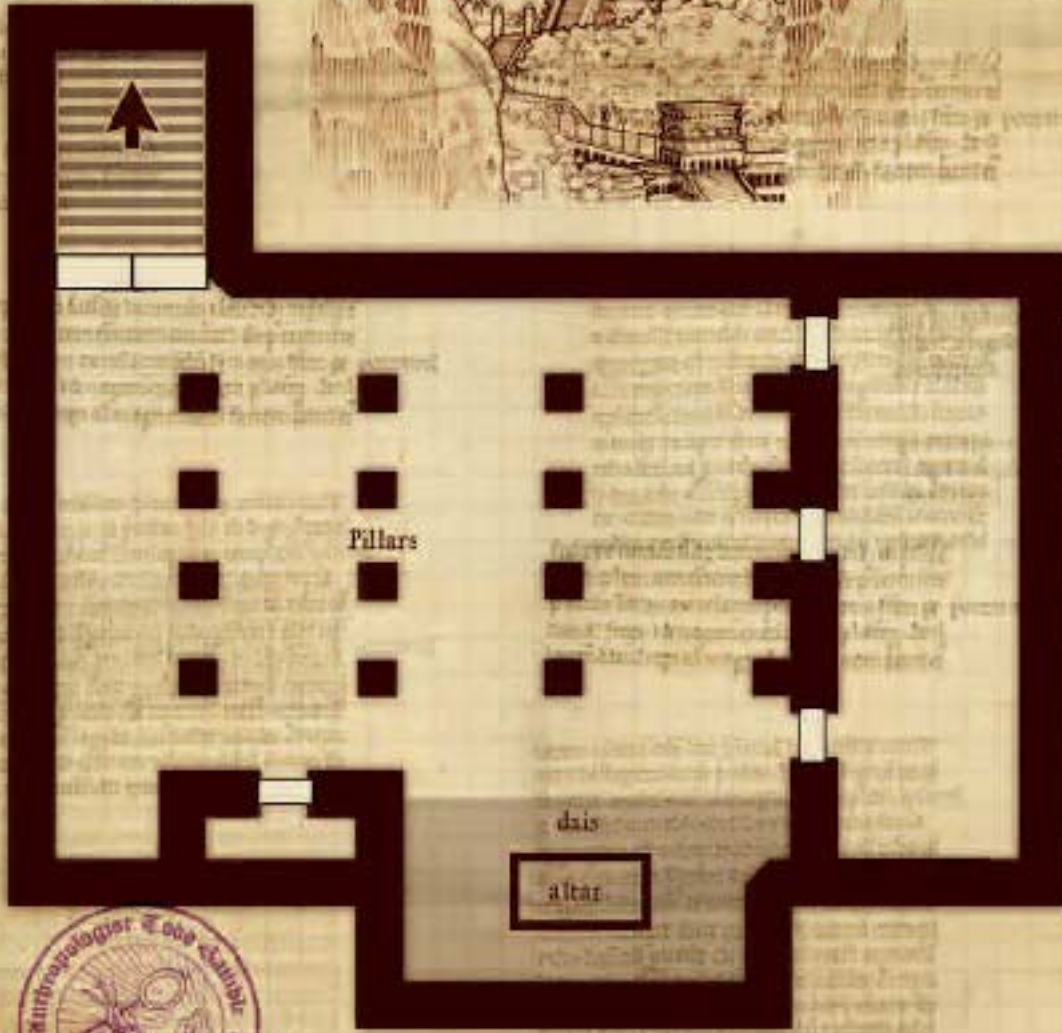
The King's Temple

One square equals 5 feet

scale measured in feet



stairs down



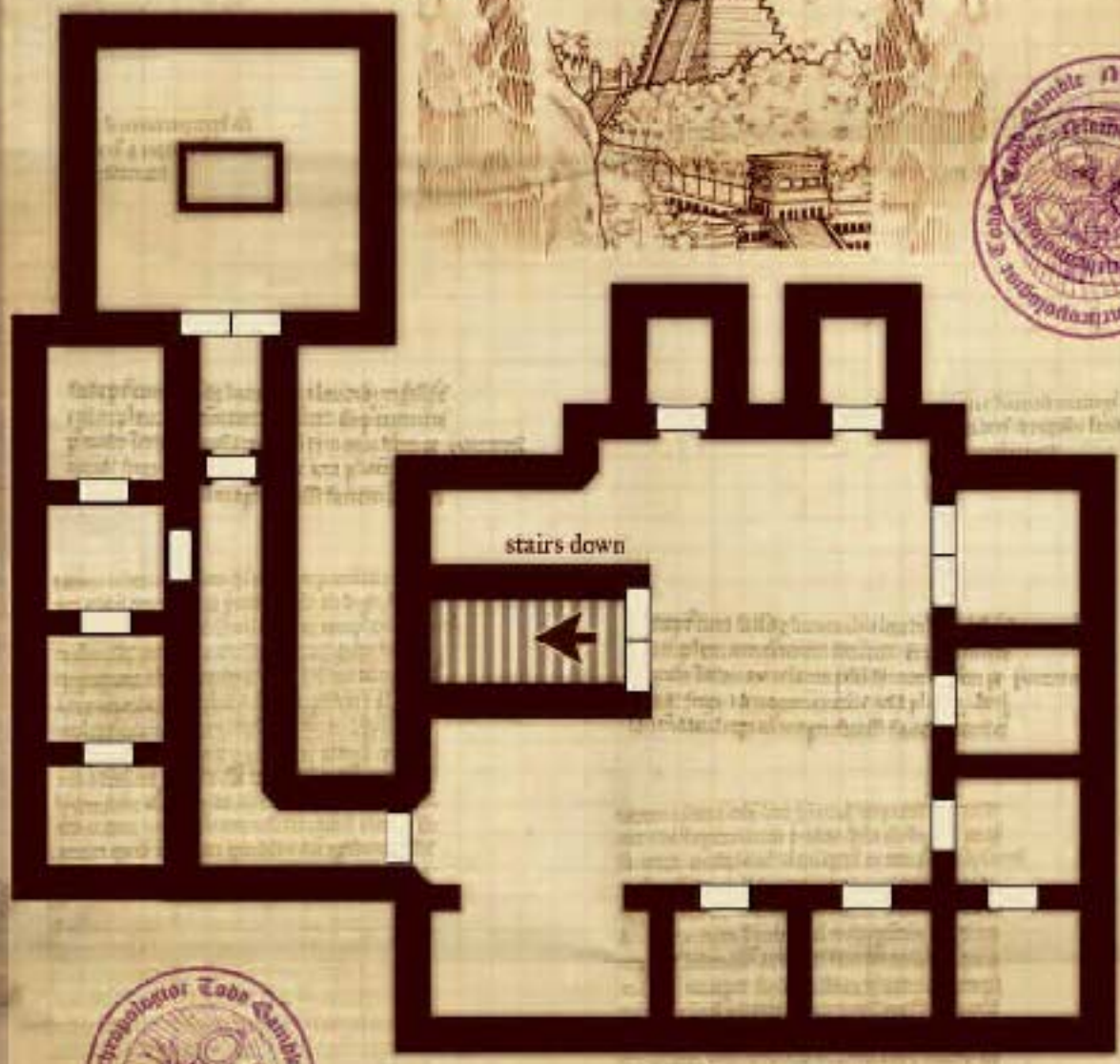
(worship room)

The King's Temple

One square equals 5 feet

Scale: 1 square = 5 feet





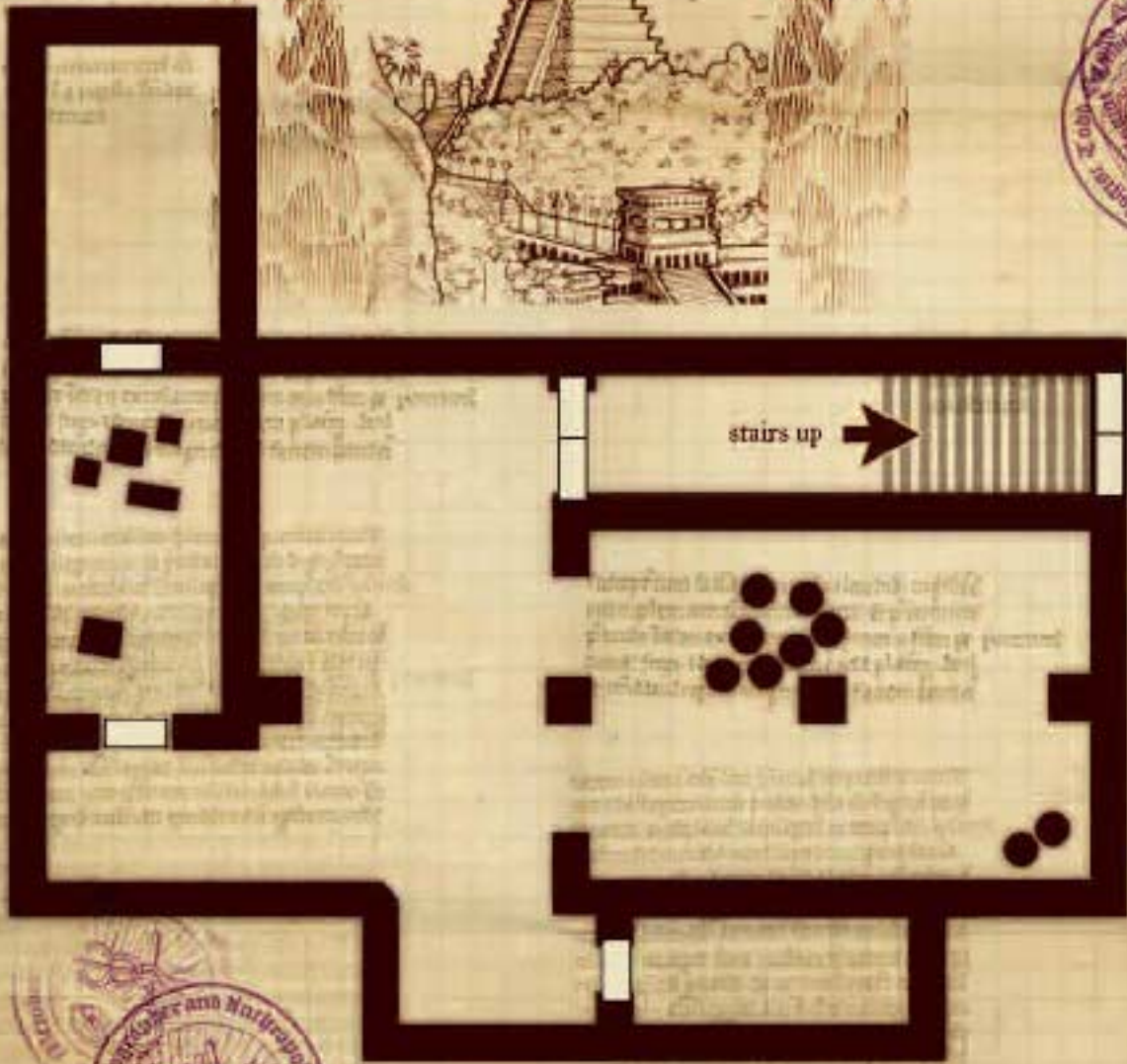
(dungeon)

The King's Temple

One square equals 5 feet



scale: 1 square = 5 feet



stairs up →

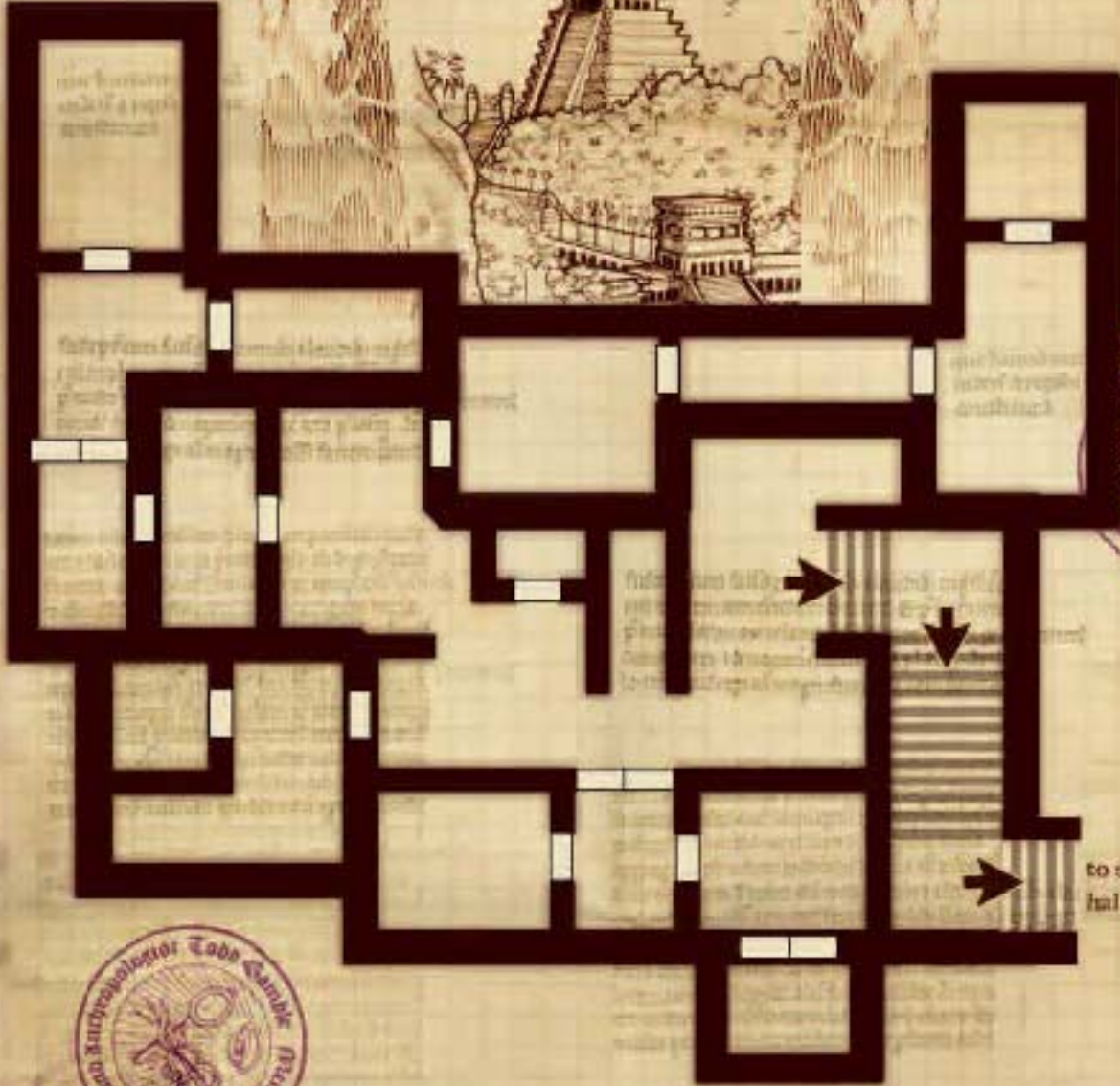


(store room)

The King's Temple

One square equals 7 feet

Scale 1/4 inch = 1 foot



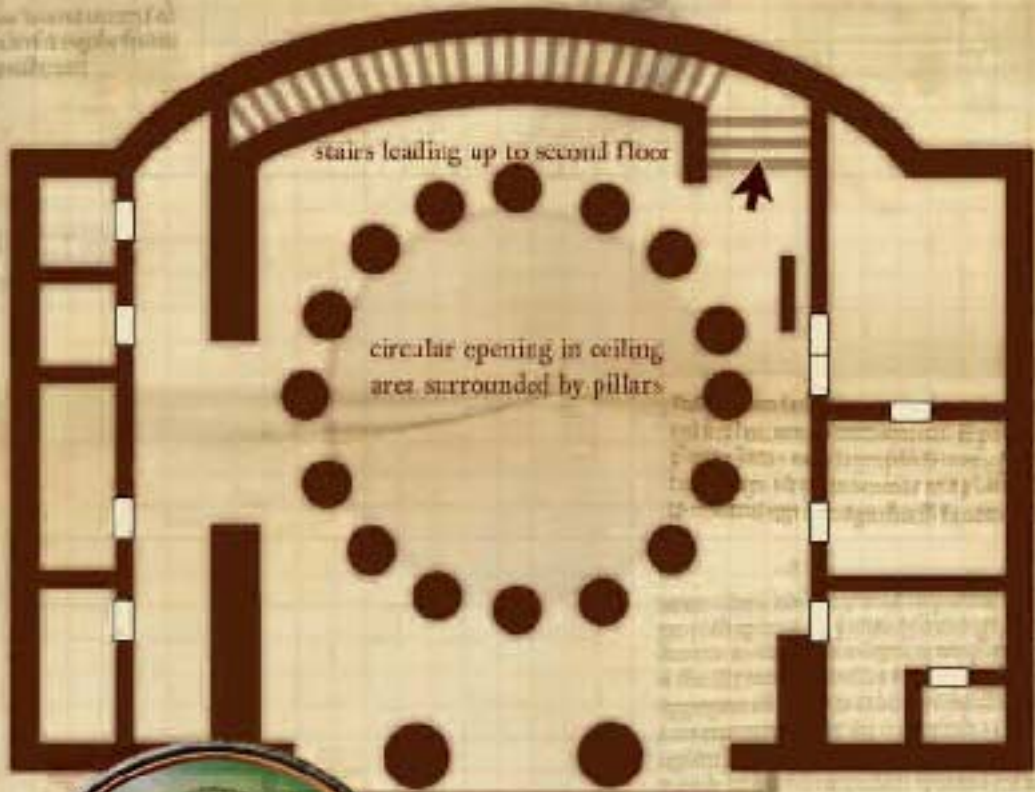
(library and study)

The King's Temple

One square equals 7 feet

scale measured in feet

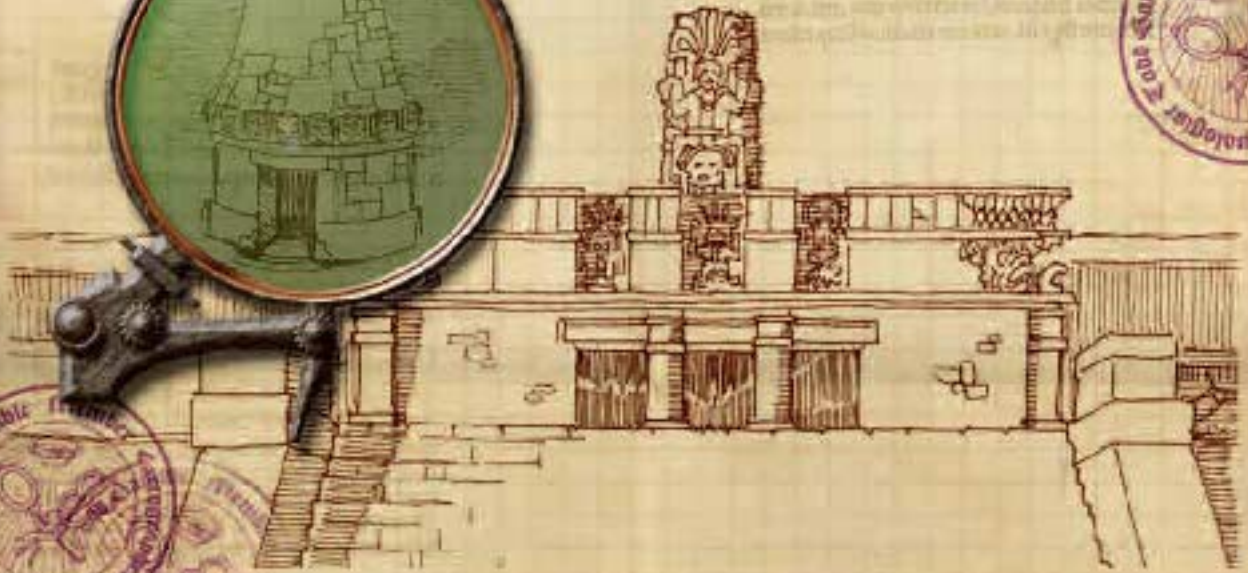
one square equals 5 feet



stairs leading up to second floor

circular opening in ceiling
area surrounded by pillars

entry steps



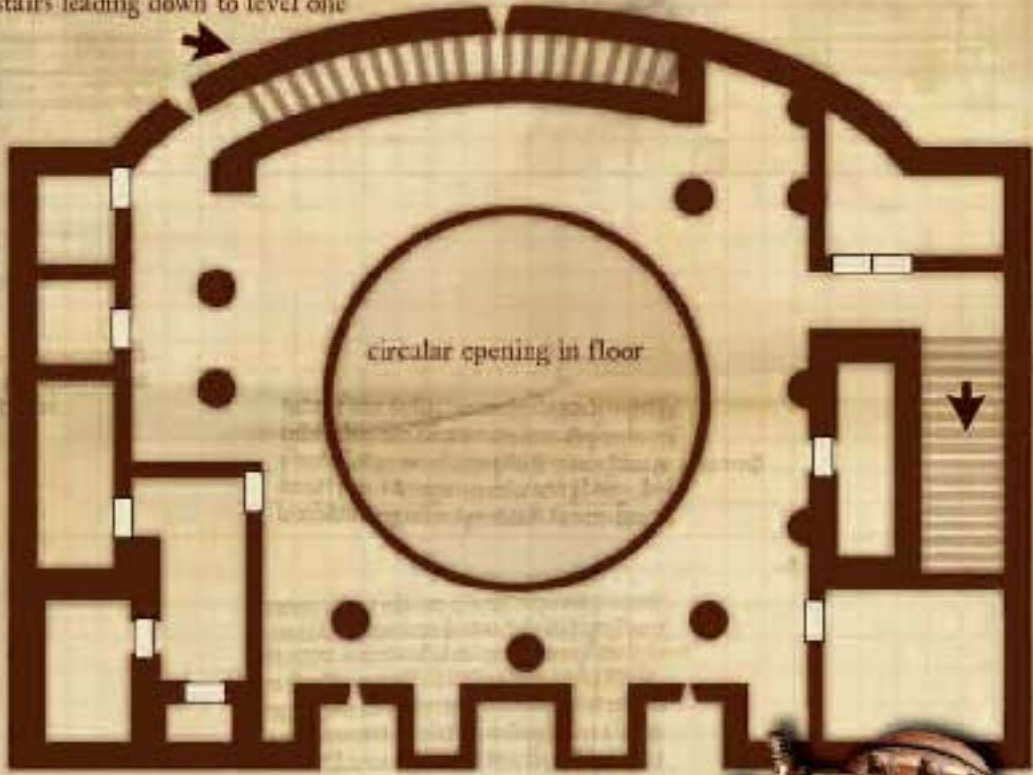
Observatory (Level One)

One square equals 5 feet



scale measured in feet

stairs leading down to level one

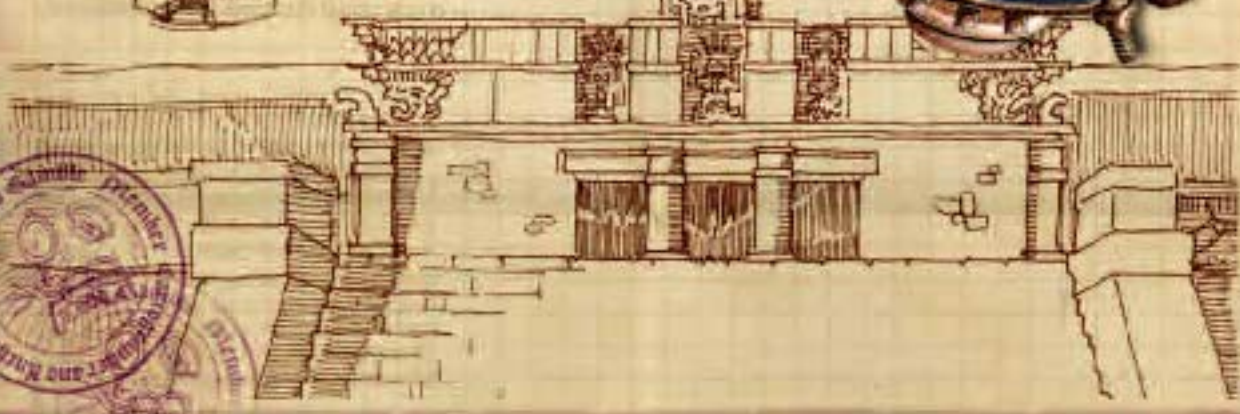
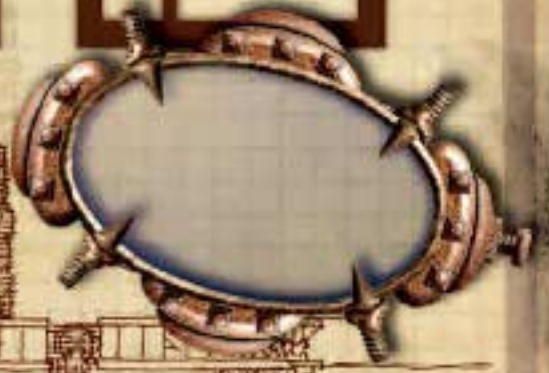


circular opening in floor

stairs leading to level three



observatory sanctuary dome

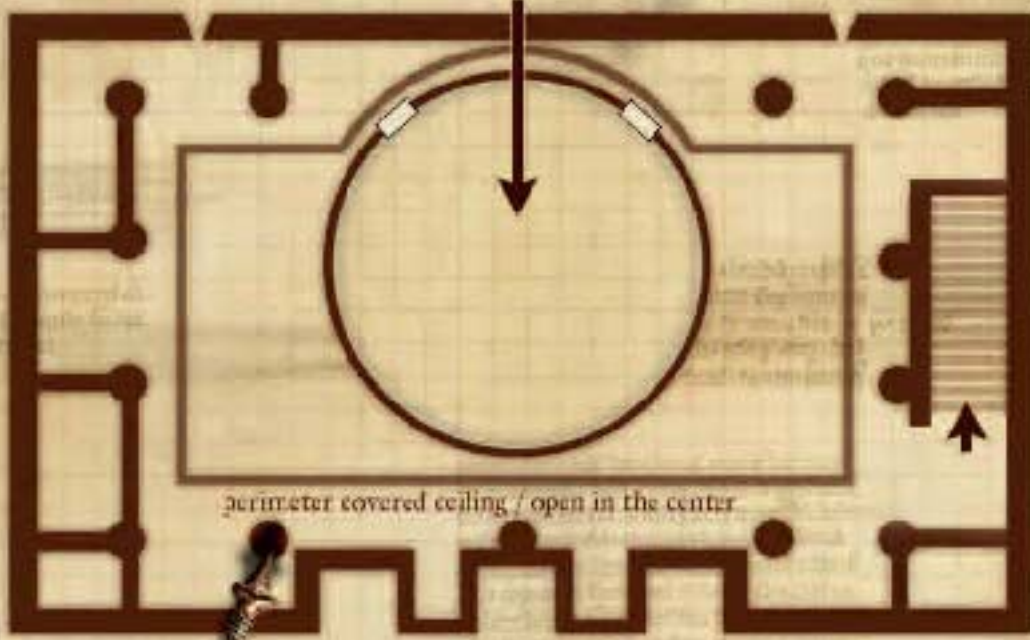


Observatory (Level Two)

One square equals 5 feet



Observatory sanctuary dome rising from open ceiling



perimeter covered ceiling / open in the center

stairs leading down to level two



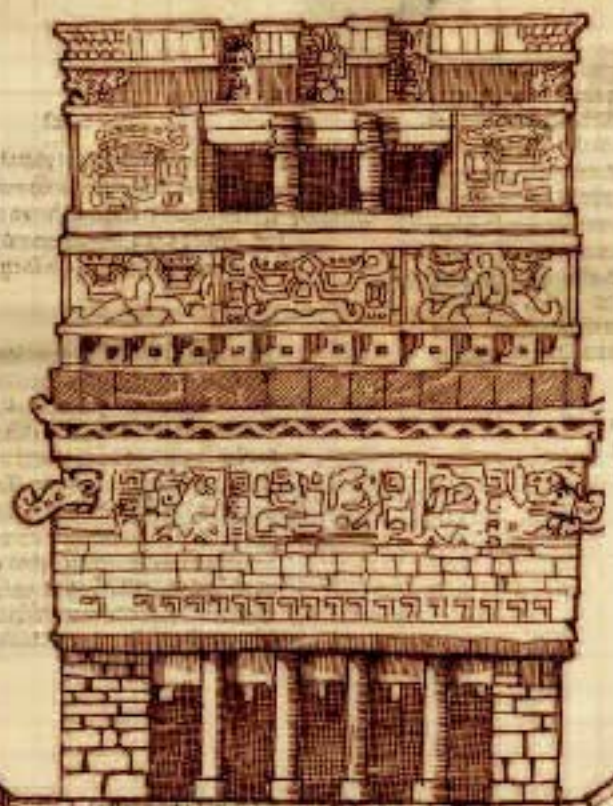
Observatory (Level Three)

One square equals 5 feet



quod non solummodo ad
virescentia aegrotis filios
quod solummodo

quod solummodo ad
virescentia aegrotis
quod solummodo

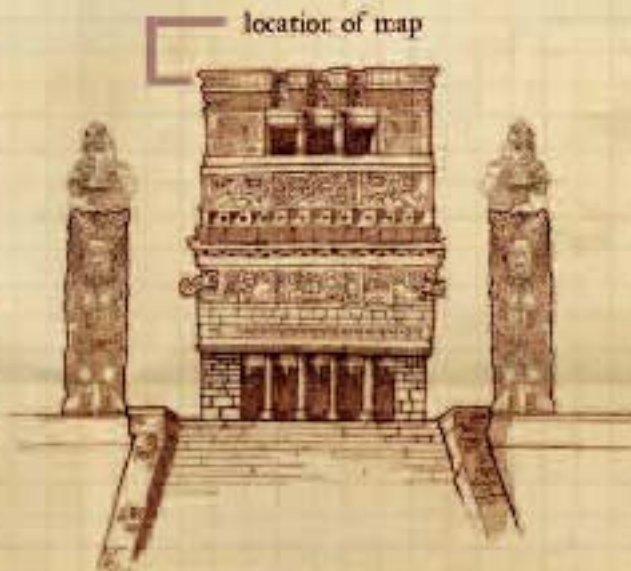
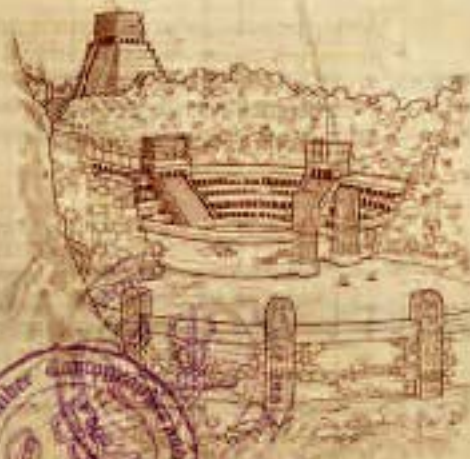
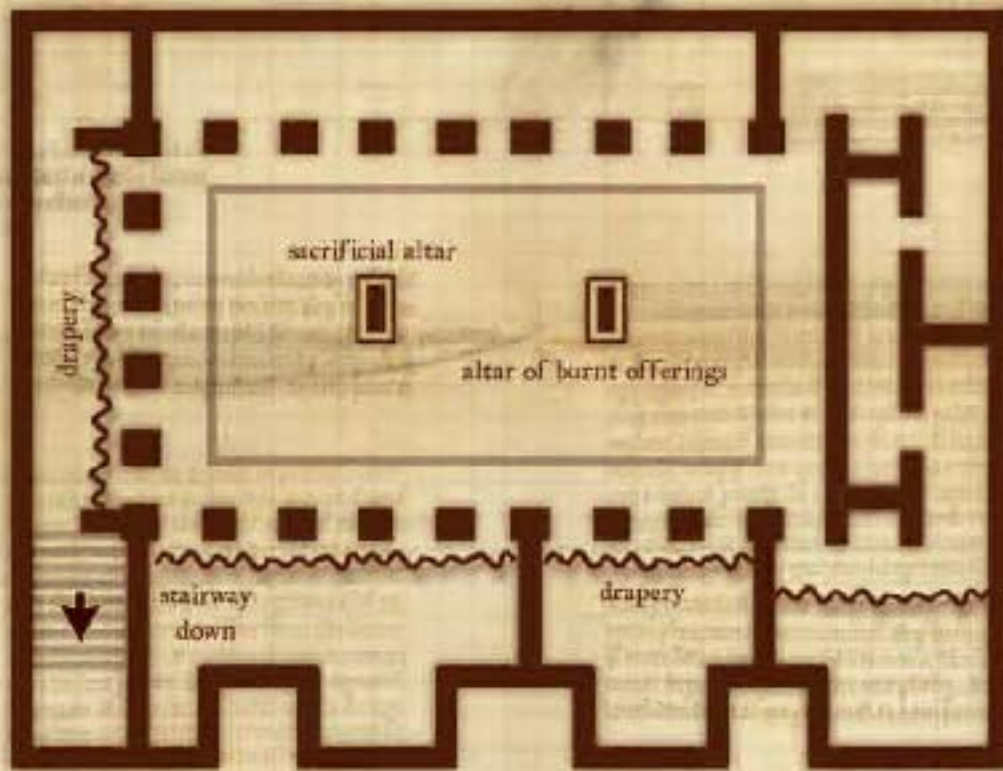


Location of the Temple of
Healing Arts



Temple of Healing Arts
(exterior view)



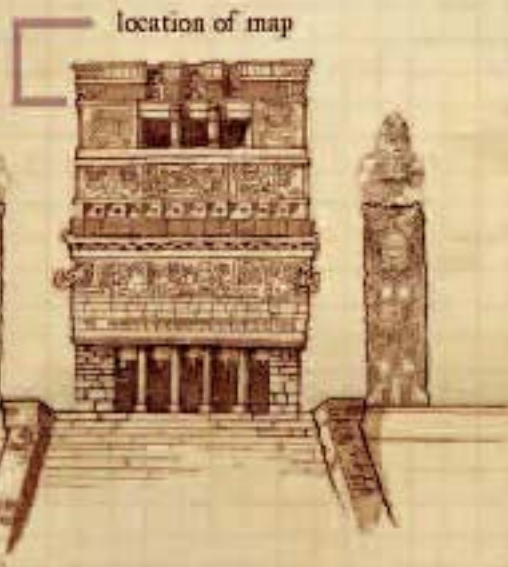
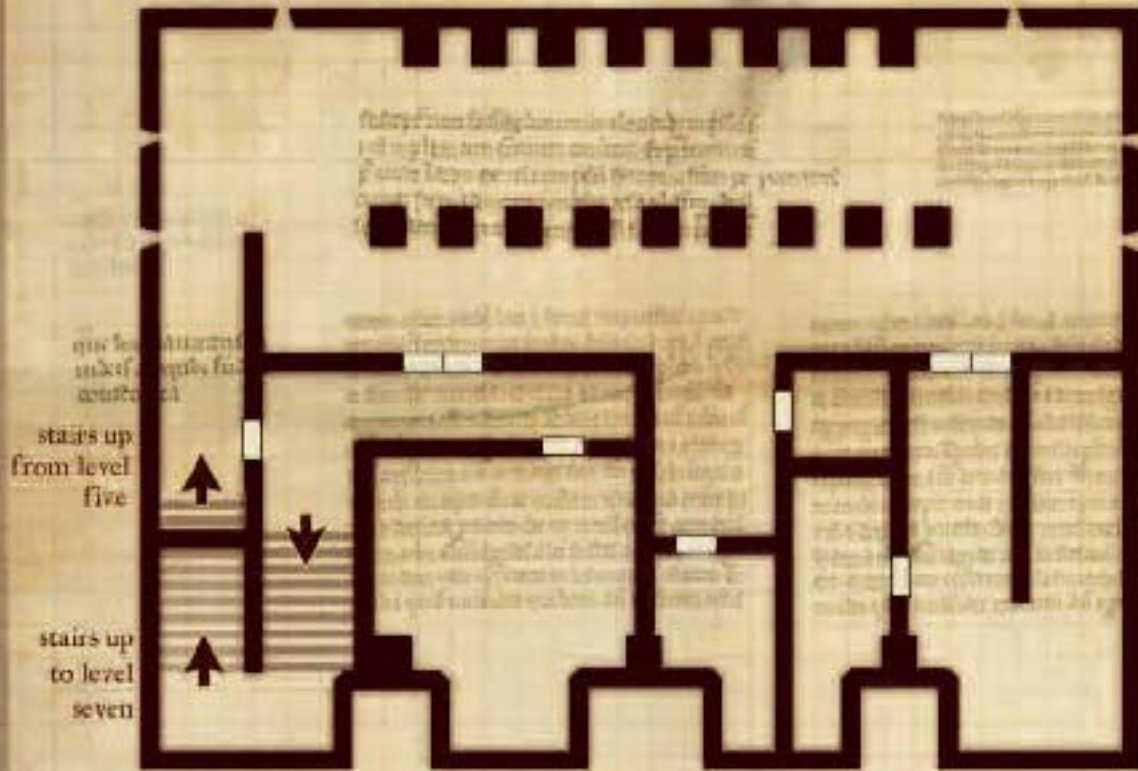


Temple of Healing Arts
(level seven)

One square equals 5 feet



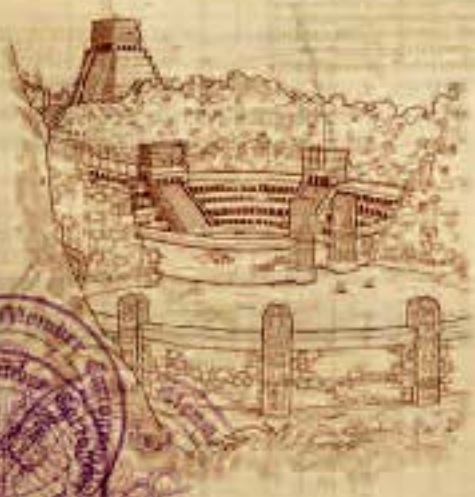
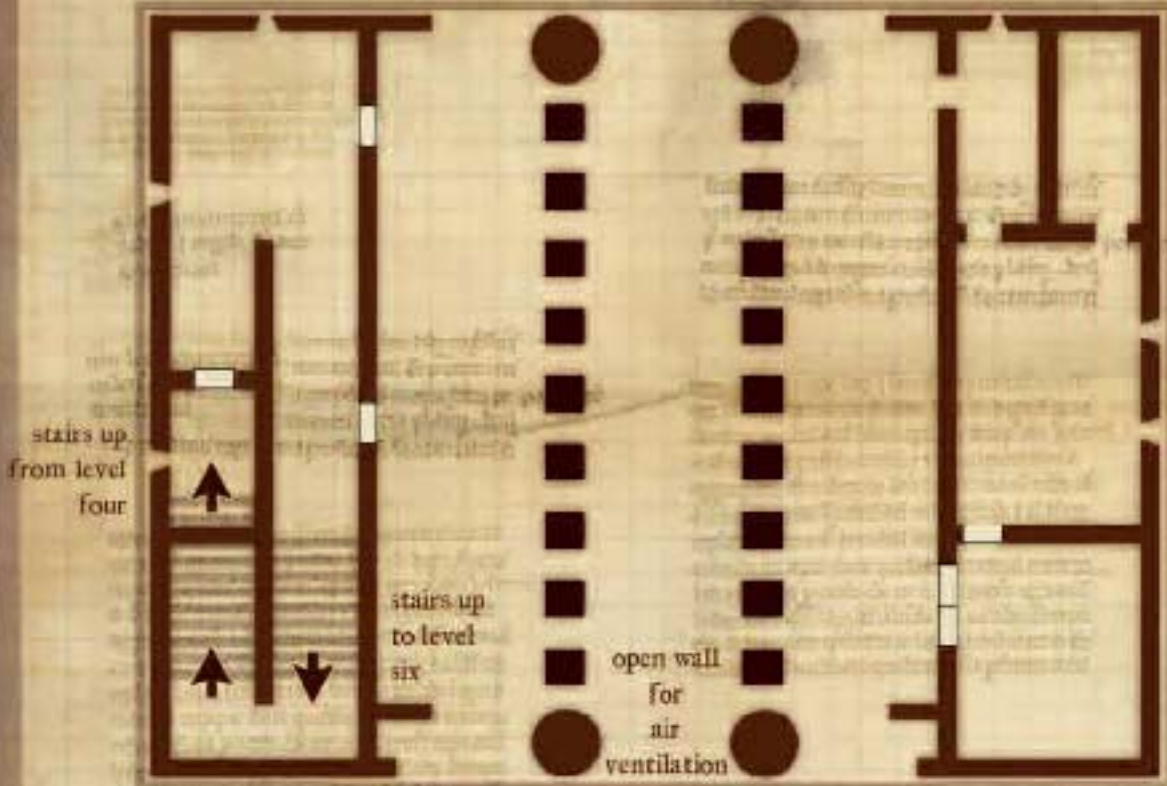
scale measured in feet



Temple of Healing Arts
(level six)

One square equals 7 feet

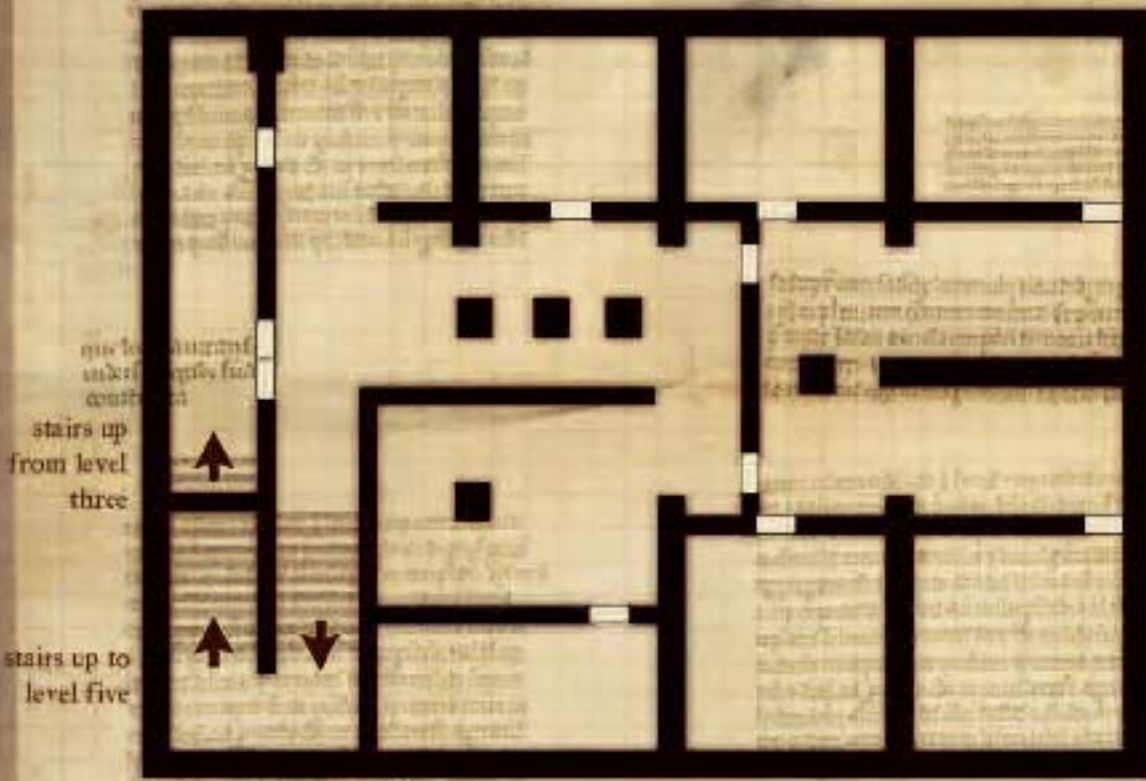




Temple of Healing Arts (level five)

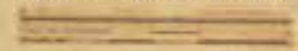
One square equals 7 feet

scale indicated in feet



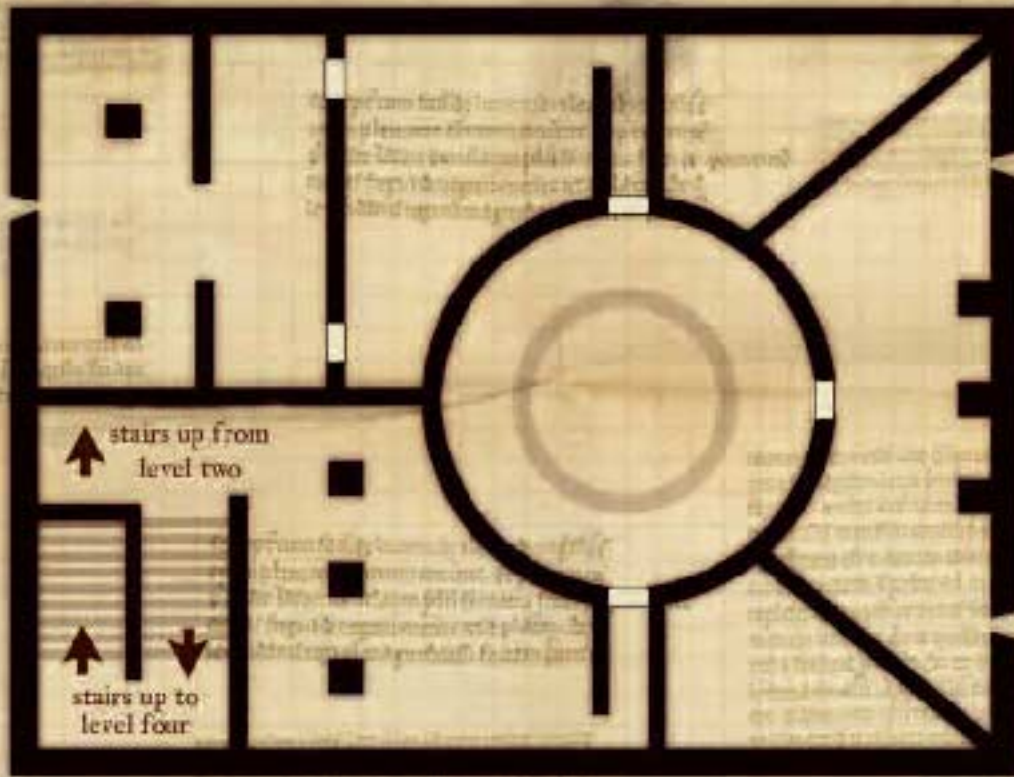
Temple of Healing Arts
(level four)

One square equals 7 feet



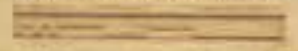
scale measured in feet



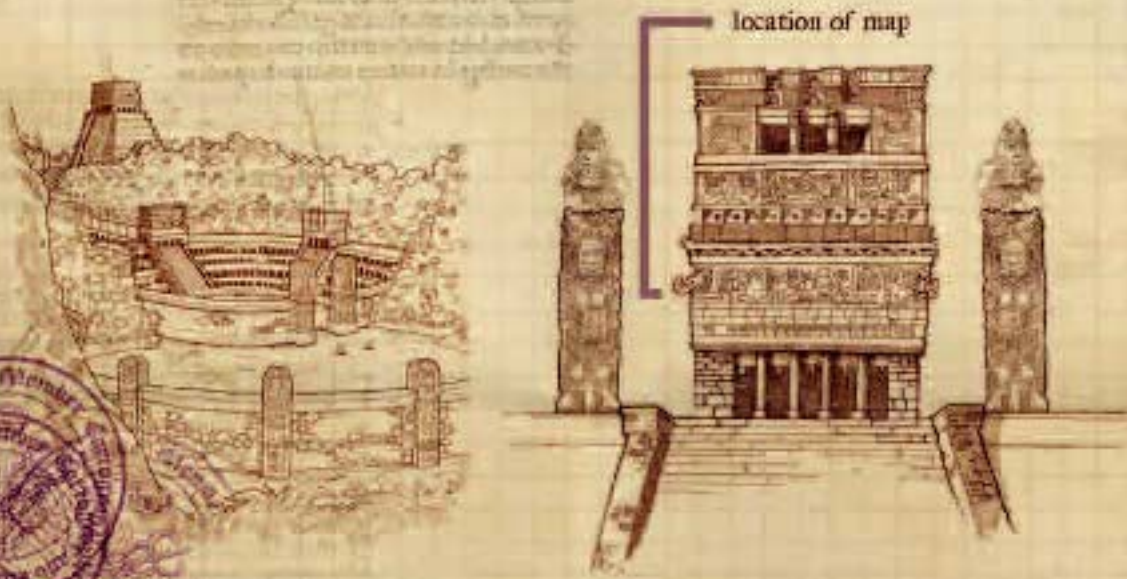
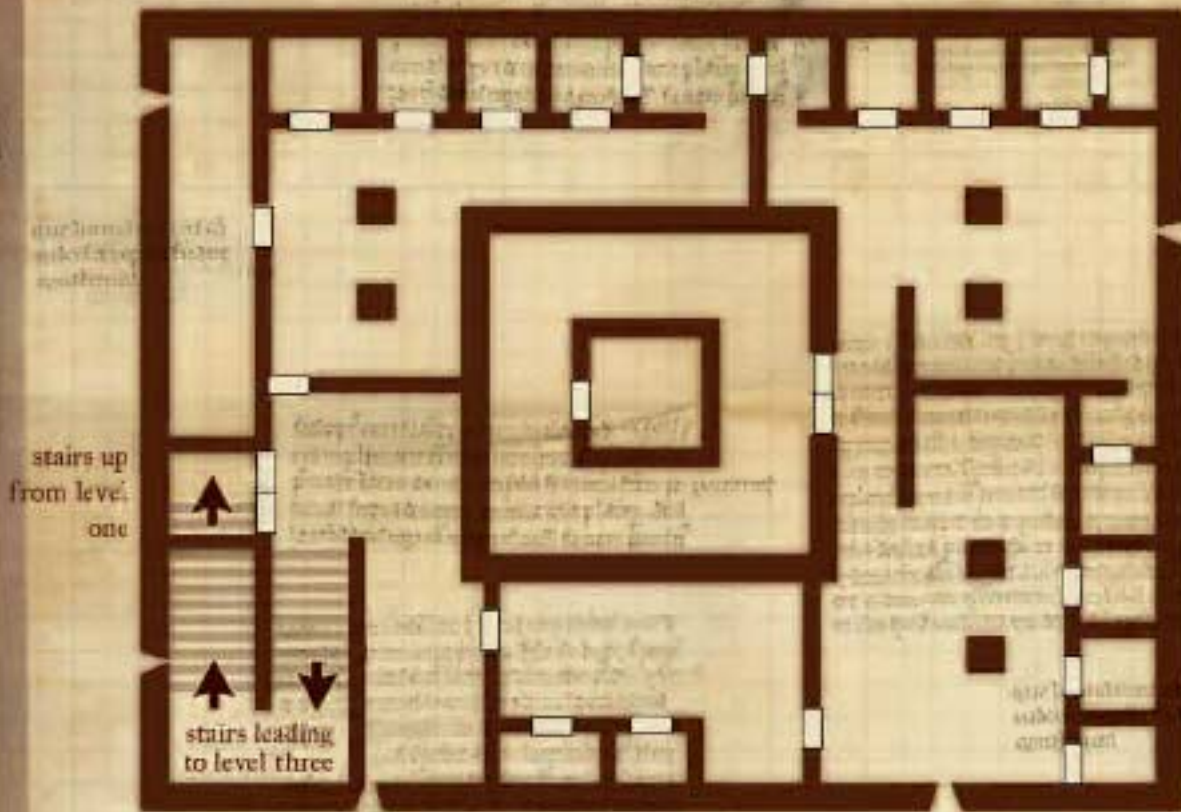


Temple of Healing Arts
(level three)

One square equals 5 feet



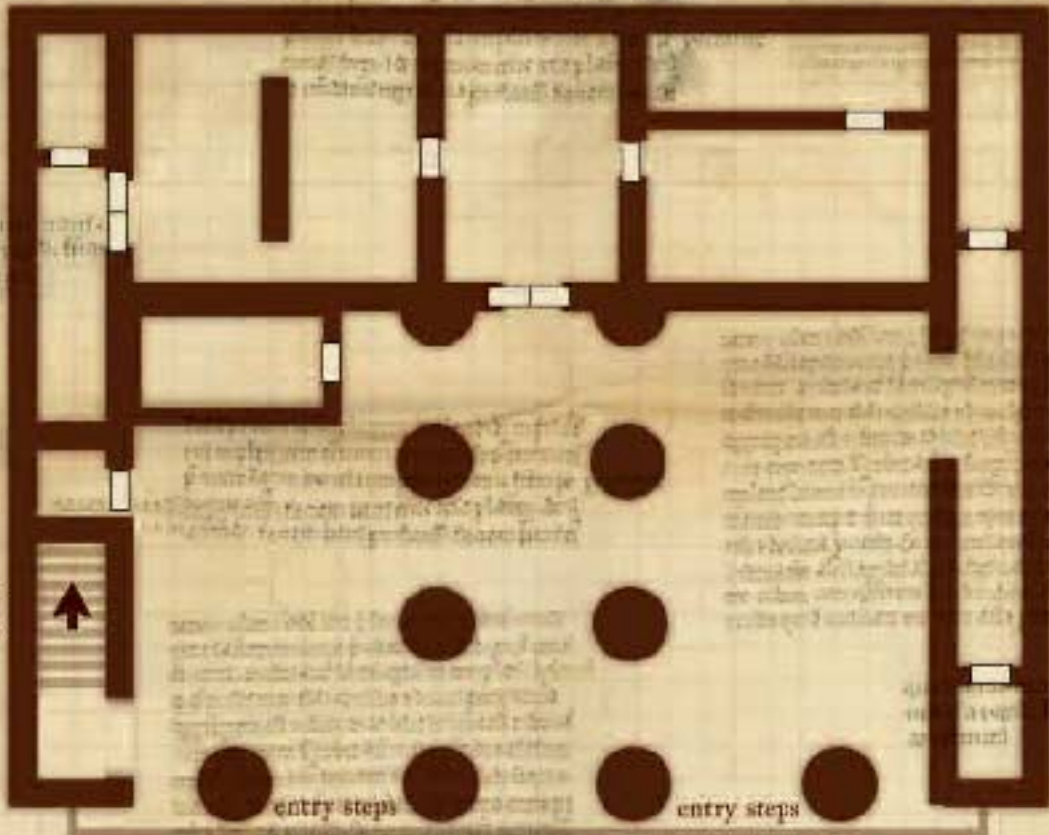
scale: 1 square = 5 feet



Temple of Healing Arts (level two)

One square equals 7 feet

scale indicated in feet



stairs up to level two

entry steps

entry steps

location of map



Temple of Healing Arts

(level one)

One square equals 7 feet

scale measured in feet



Inset showing the Isle of Chac Tlaloc and the port city of "Atl".



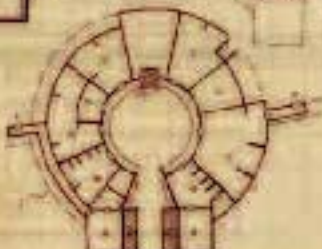
View of city looking to the Northeast.

Todd Gamble, Cartographer



Our Square Equals 1500 linear Feet

City of "Atl" on the isle of *Chac Tlaloc* and the continent of "Axchilan"

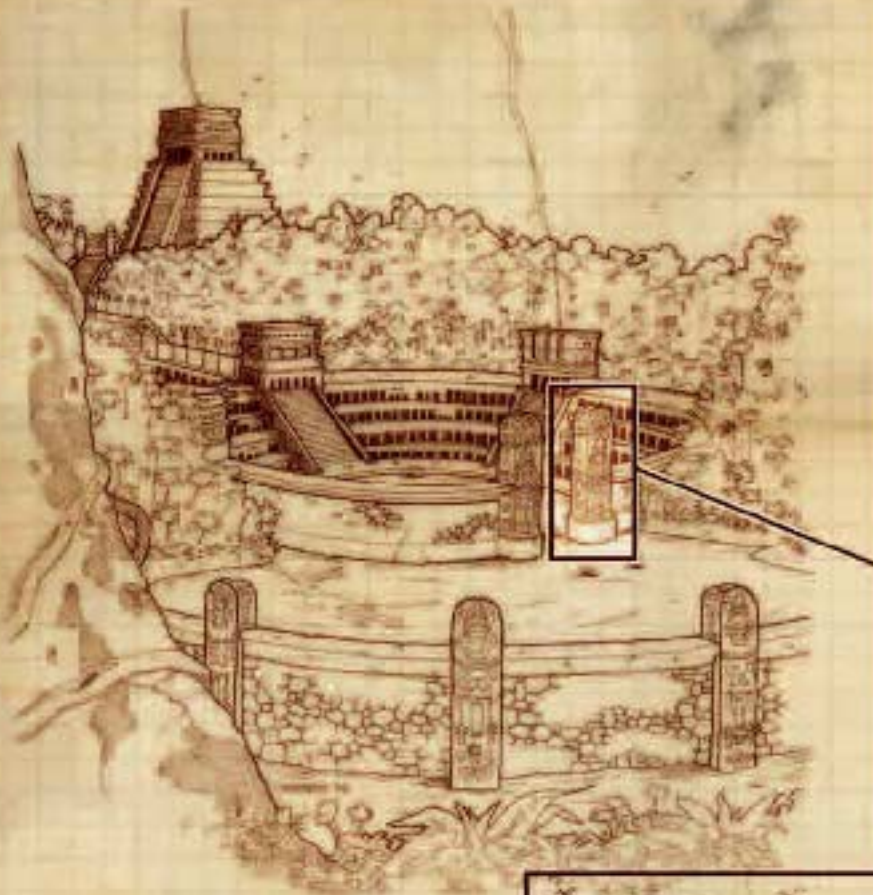


City Overview

(abstract plan views of various levels
and animal life found on isle of Chac Tlaloc)

(scale not applicable)

scale measured in feet



City Overview

(detail of entry statues and view of city looking north)

(scale not applicable)

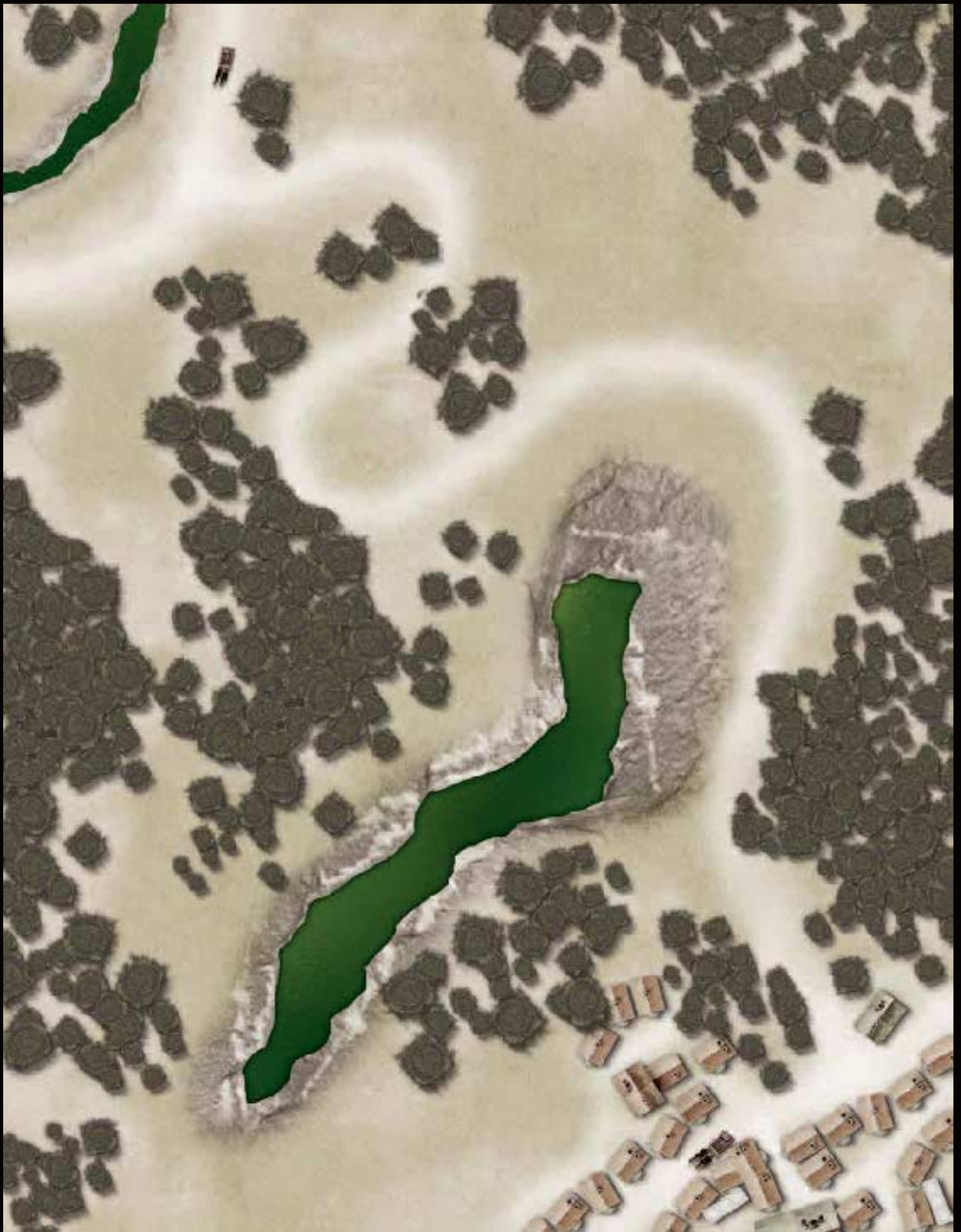
scale measured in feet

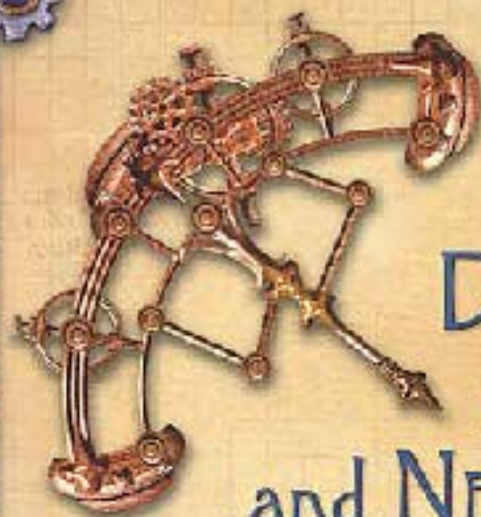












DISCOVER ANCIENT SITES and NEW ADVENTURES

Explore labyrinthine tunnels, a mysterious observatory, an imposing temple, and other intriguing locations with the aid of these thirty-two full-color maps. Whether used as inspiration for creating new adventures, as a handy reference during your game, or as a detailed handout to capture your players' imagination, each map offers the promise of adventure, the threat of danger, and the allure of reward.

When combined, the maps in this folio create an exotic walled city built centuries ago by a mighty civilization. Whether still populated by a thriving society, overrun with monsters, or hauntingly vacant, this colossal city holds countless secrets waiting to be uncovered.

These all new maps are the second in a new series of materials created to help you add flavor and functionality to your D&D® game.

Visit our website at www.wizards.com/dnd

